

cinno WiFi Scannr

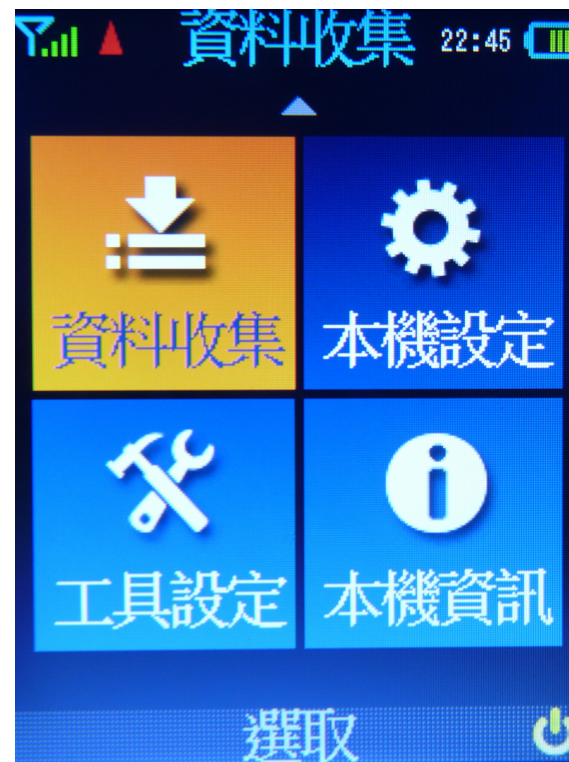


使用操作說明

F790WD 主畫面功能簡介



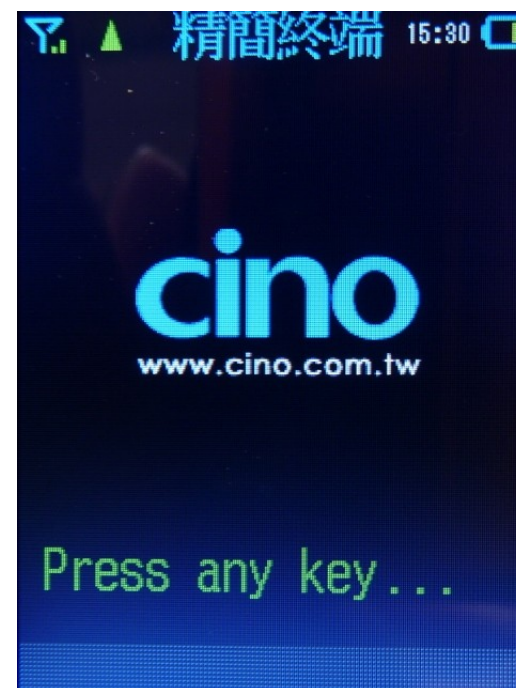
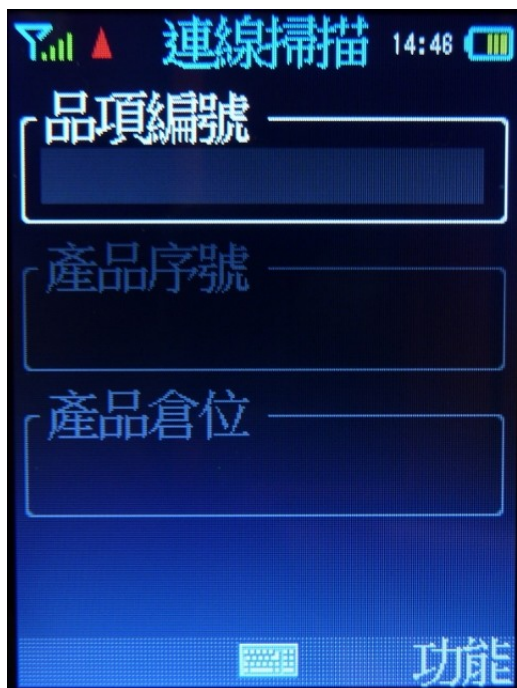
F790WD 六項功能畫面



F790WD 主畫面功能簡介



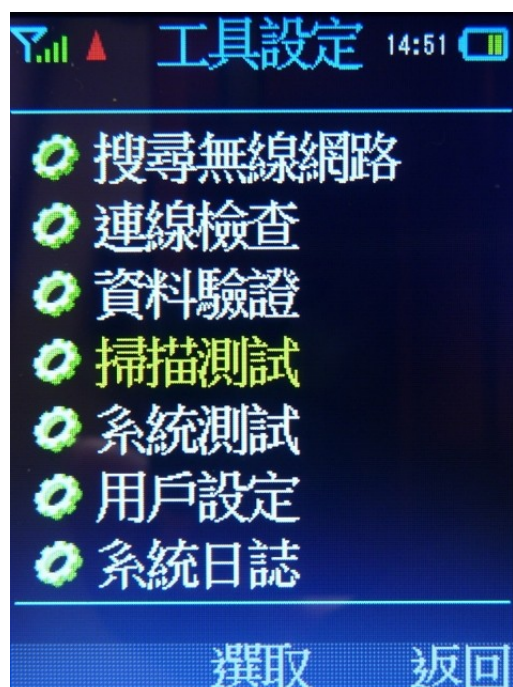
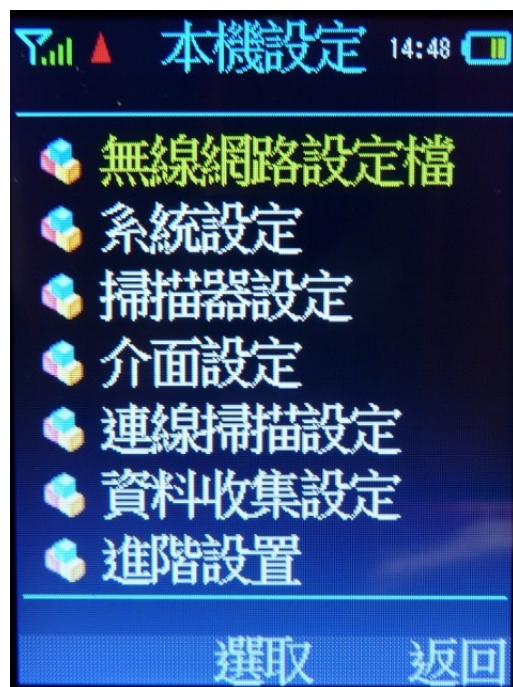
F790WD 六項功能畫面



F790WD 主畫面功能簡介



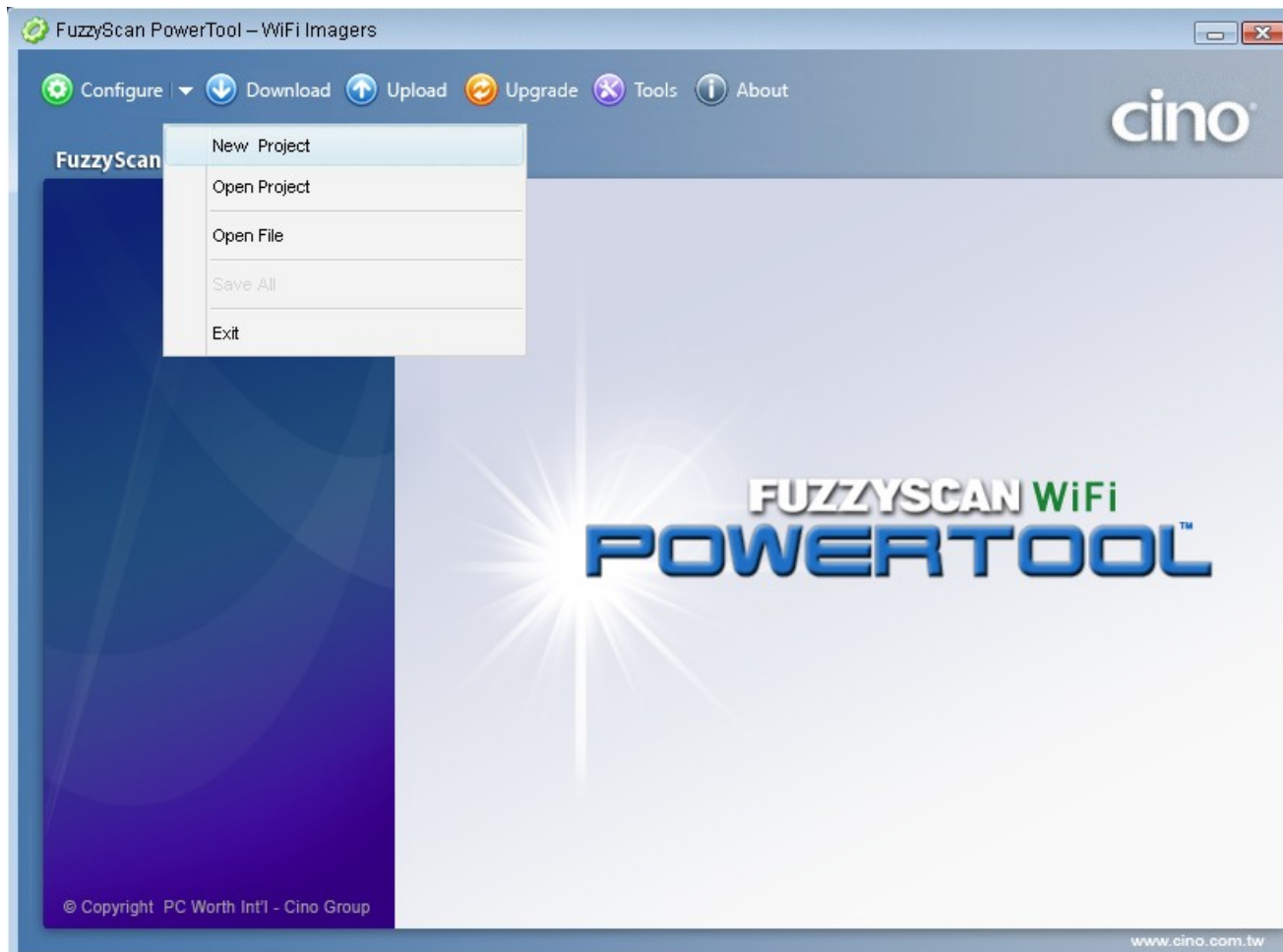
F790WD 六項功能畫面



F790WD 安裝中文畫面



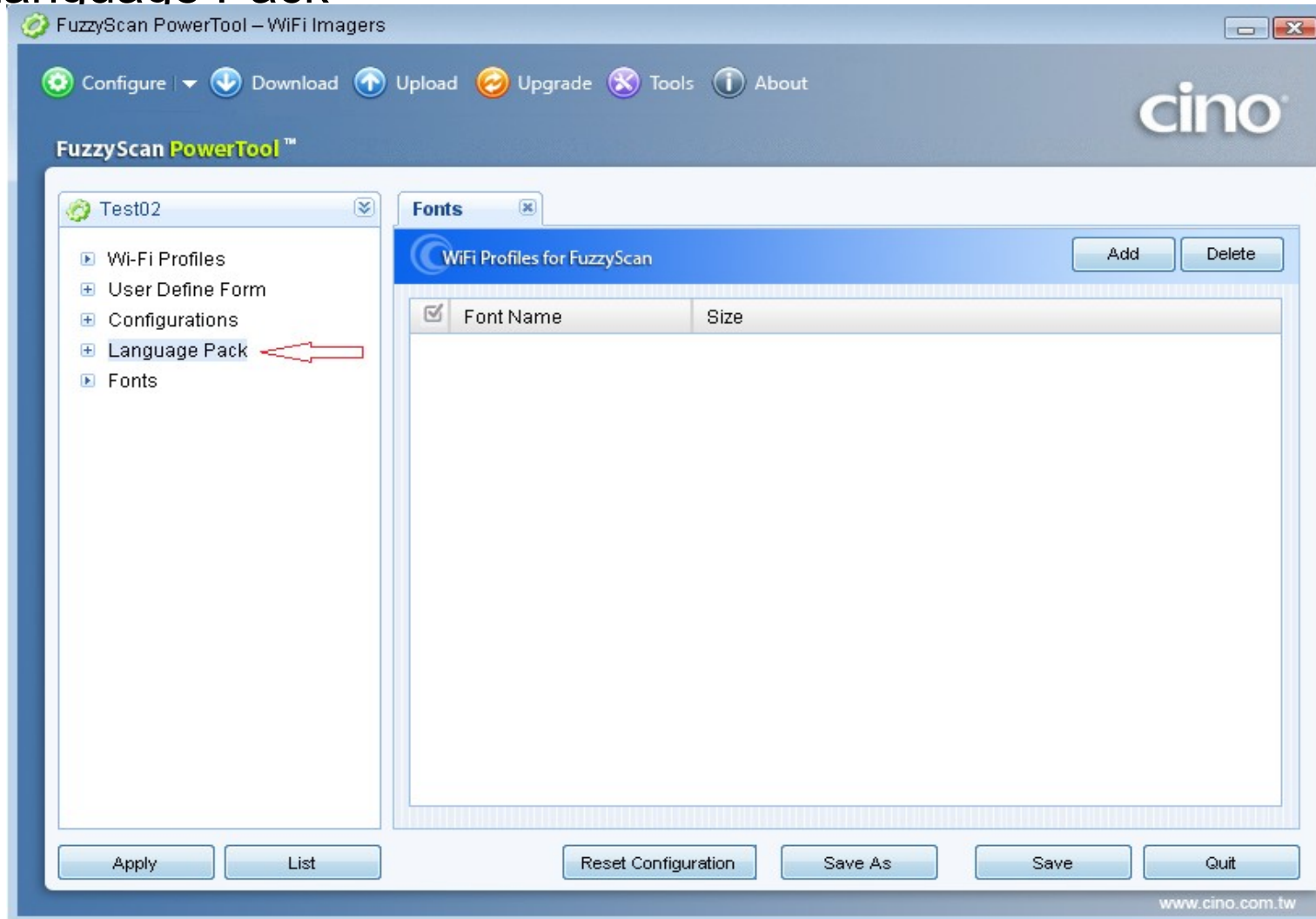
開啟專案 / 項目檔案



F790WD 安裝中文畫面

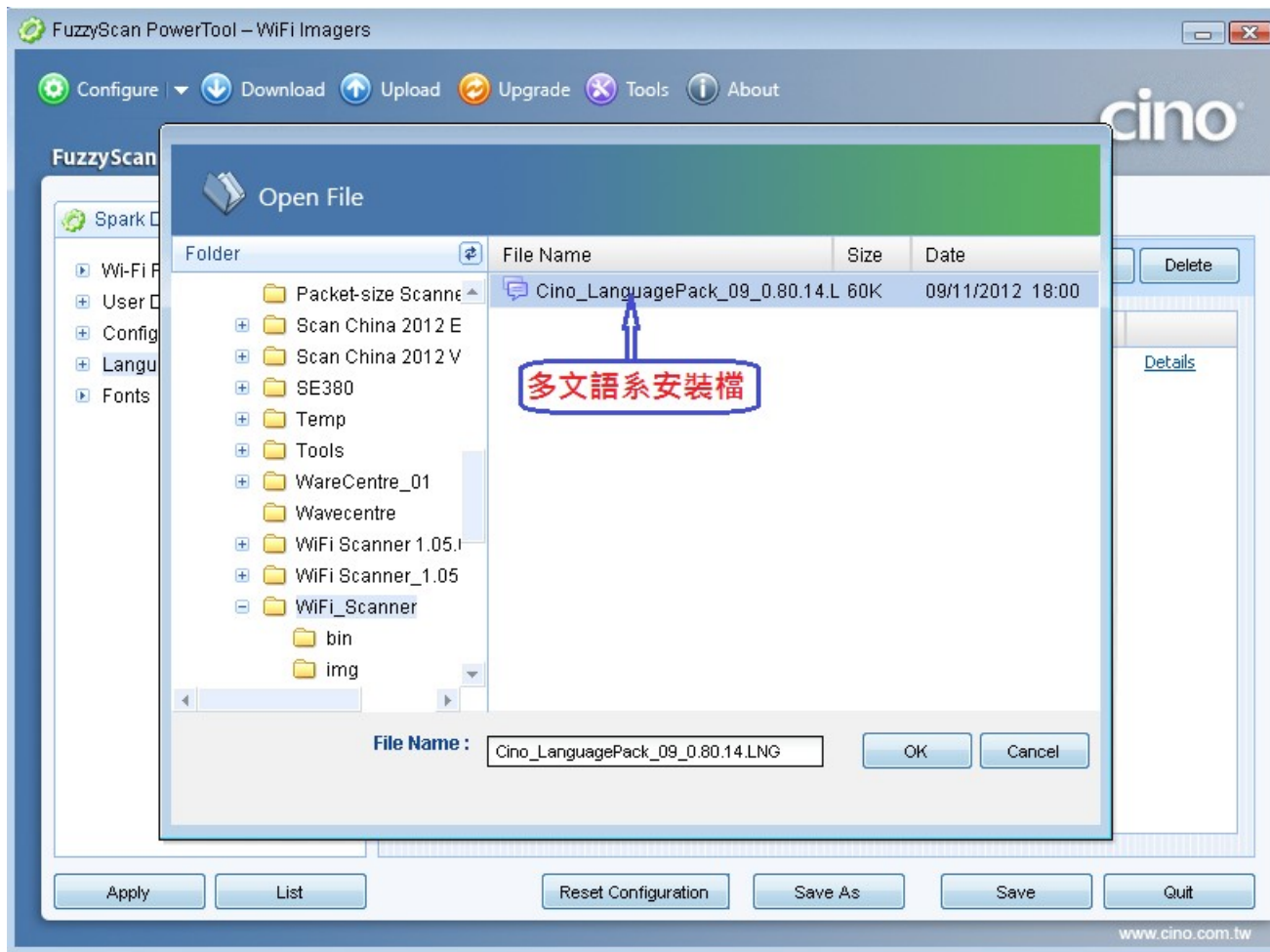


選擇 Language Pack



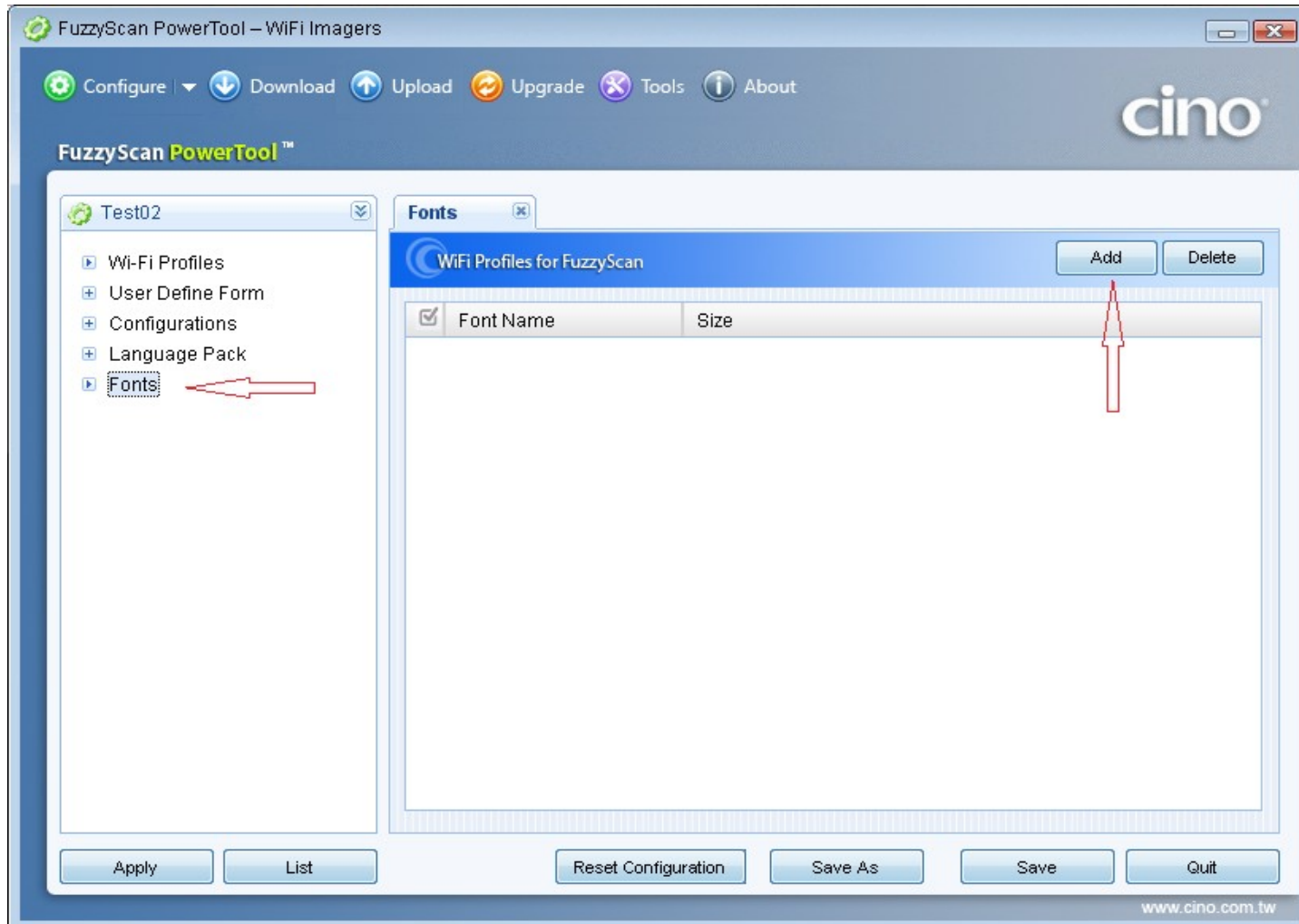
F790WD 安裝中文畫面

選擇 Language Pack



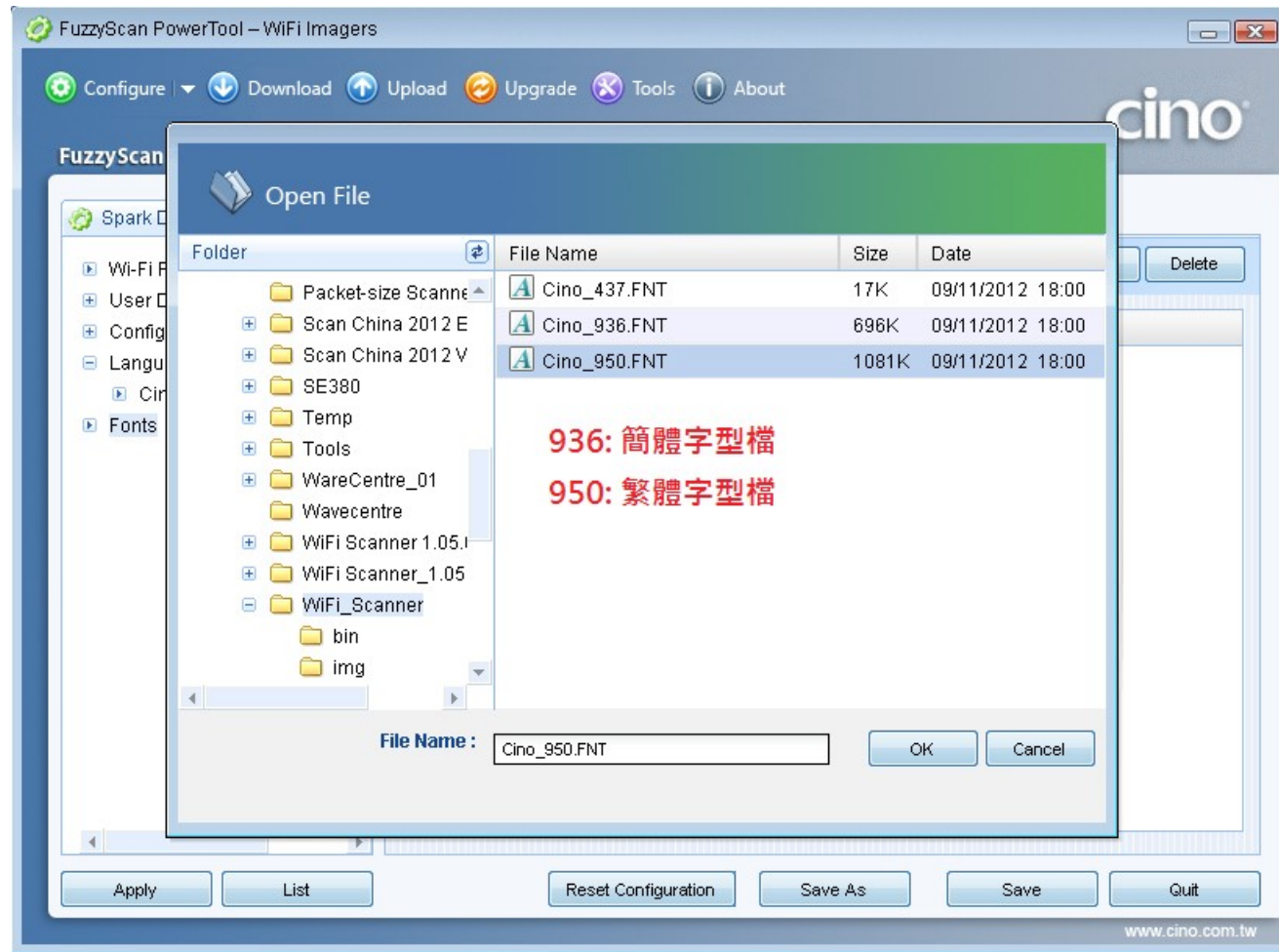
F790WD 安裝中文畫面

選擇字型檔



F790WD 安裝中文畫面

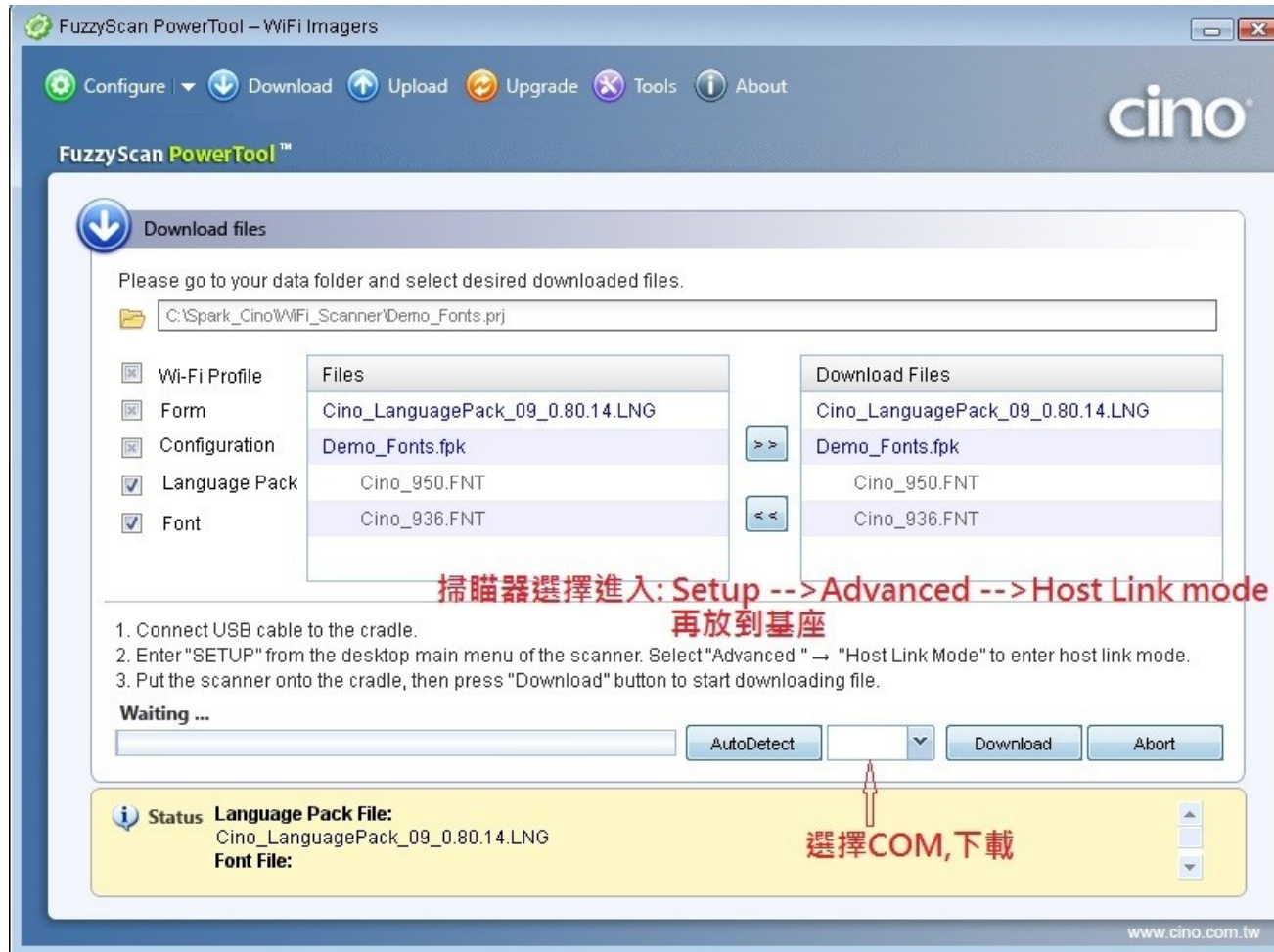
選擇字型檔



F790WD 安裝中文畫面

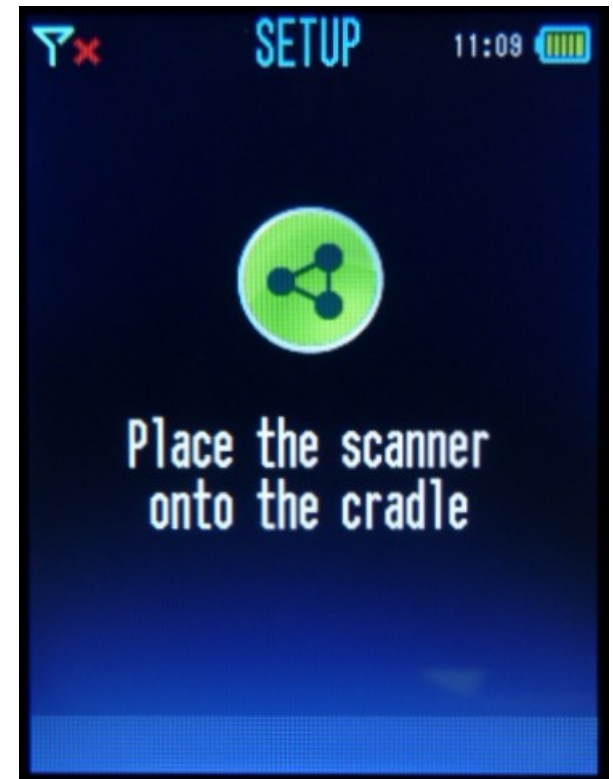
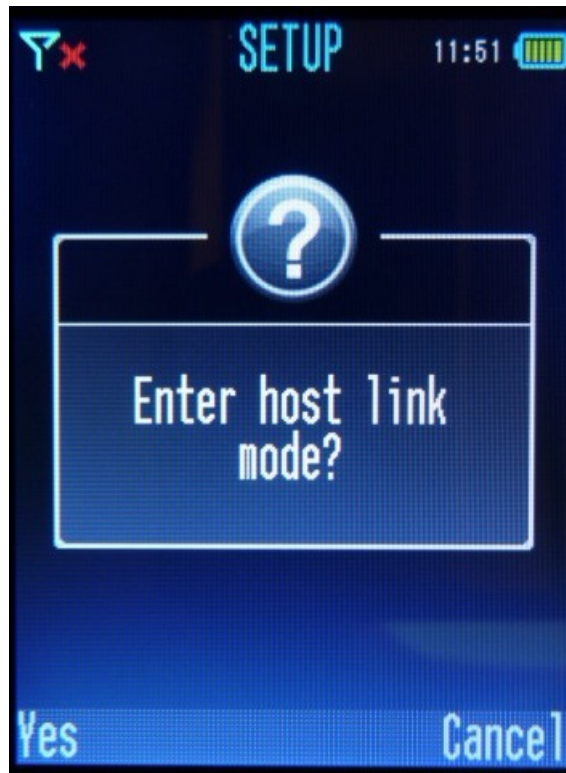


下載多文語系安裝檔及字型檔



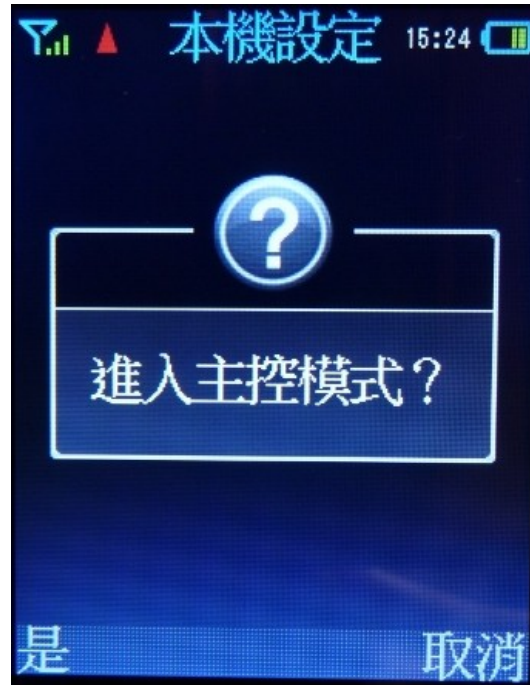
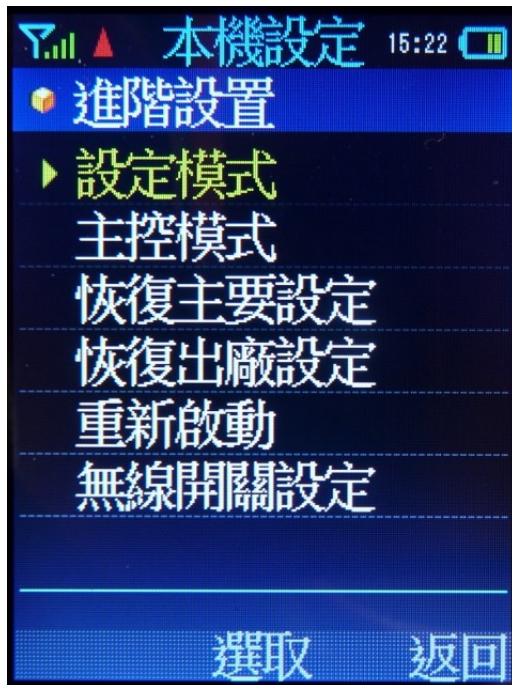
F790WD 功能說明

本機設定 / 進階設定 / 主控模式 (Host Link mode)
 Setup/Advanced/Host Link mode



F790WD 功能說明

本機設定 / 進階設定 / 主控模式 (Host Link mode)
 Setup/Advanced/Host Link mode



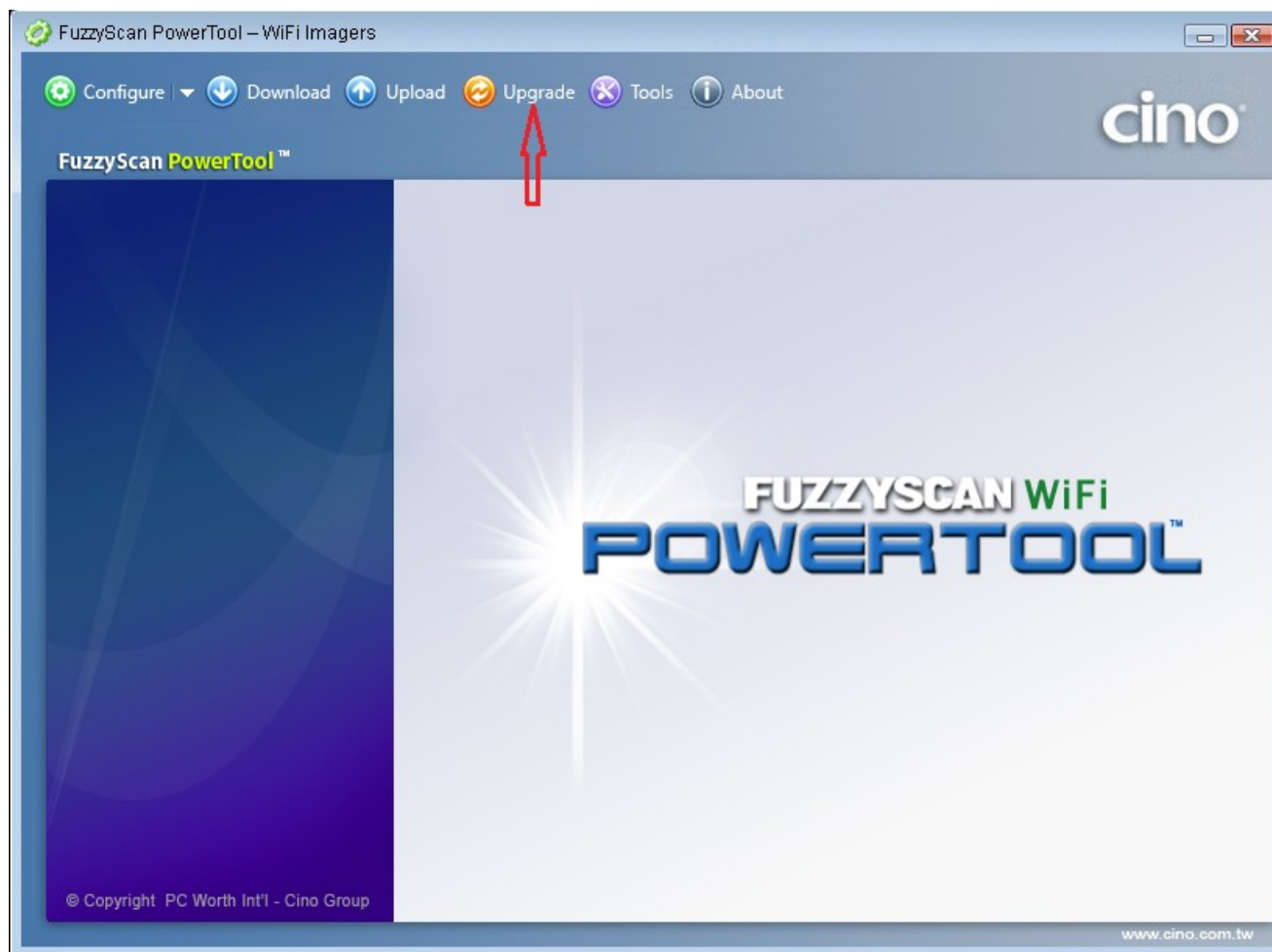
F790WD 安裝中文畫面

掃描器選擇中文操作



F790WD 更新 Firmware

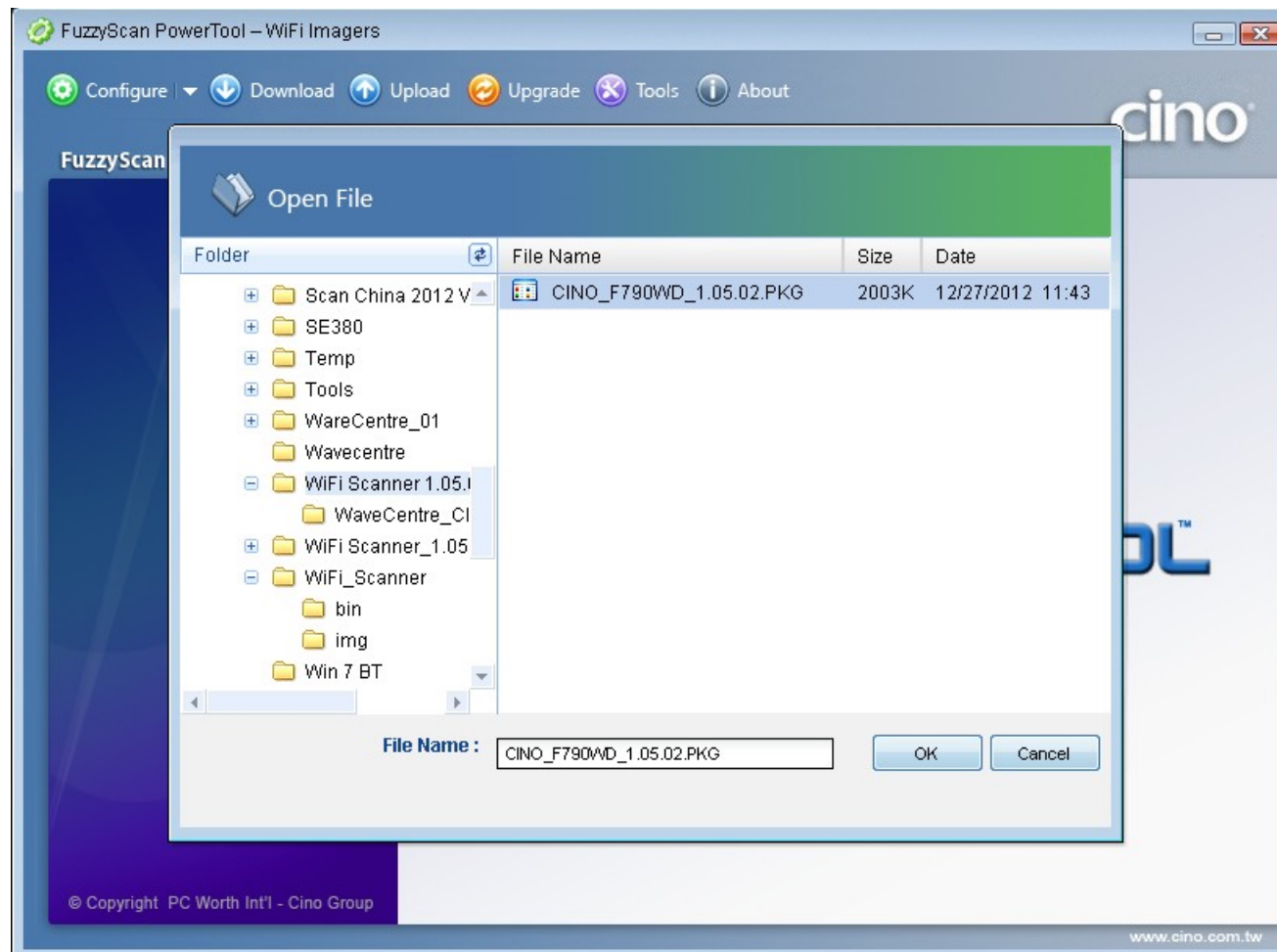
Upgrade



F790WD 更新 Firmware



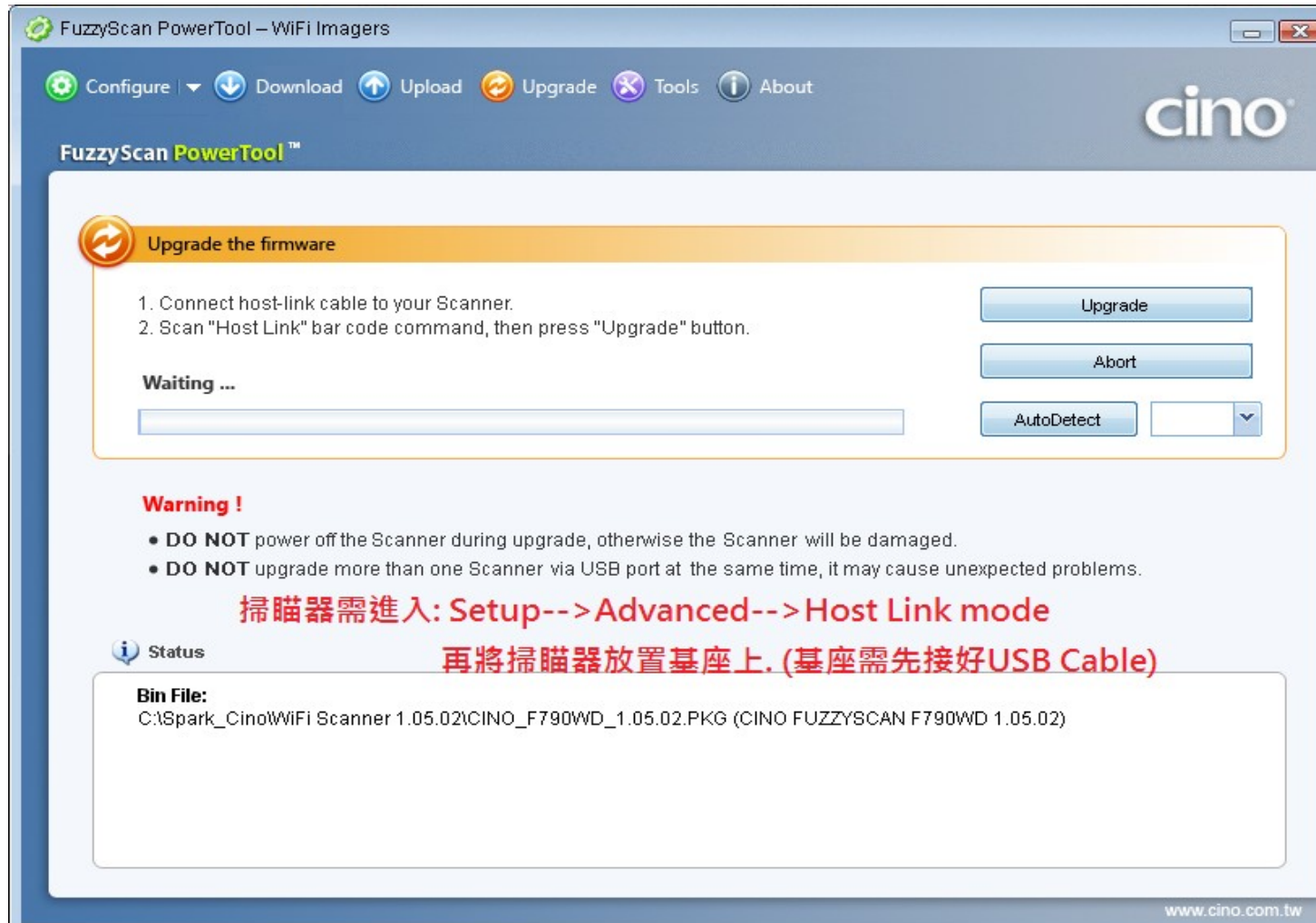
Upgrade



F790WD 更新 Firmware



Upgrade



F790WD 功能說明

本機設定 / 進階設定 / 主控模式 (Host Link mode)
 Setup/Advanced/Host Link mode

